

Officiating with Build Out Lines
 in U9 & U10 Matches
 By Eric Highsmith

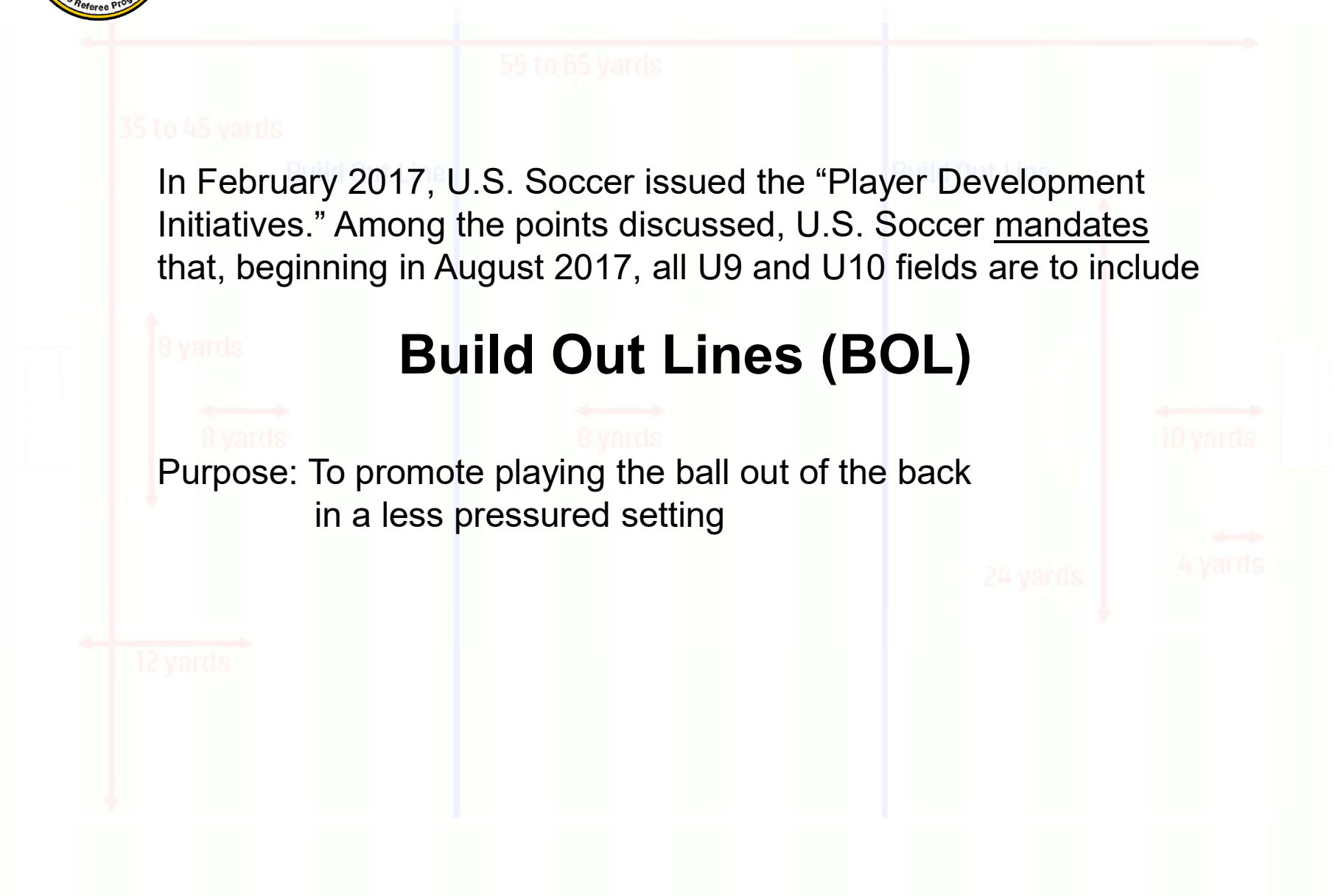


Officiating with Build Out Lines in U9 & U10 Matches

In February 2017, U.S. Soccer issued the “Player Development Initiatives.” Among the points discussed, U.S. Soccer mandates that, beginning in August 2017, all U9 and U10 fields are to include

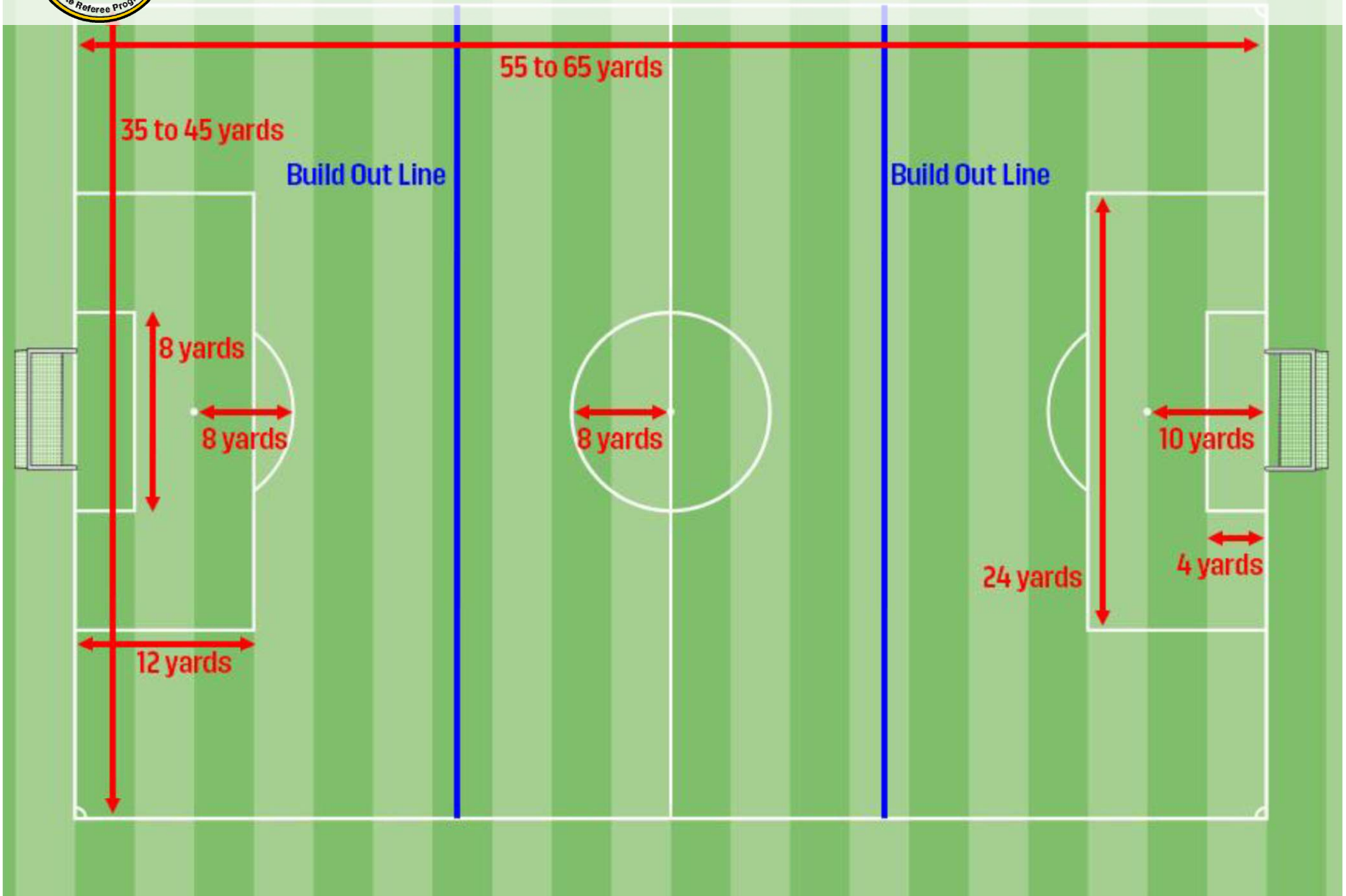
Build Out Lines (BOL)

Purpose: To promote playing the ball out of the back
in a less pressured setting



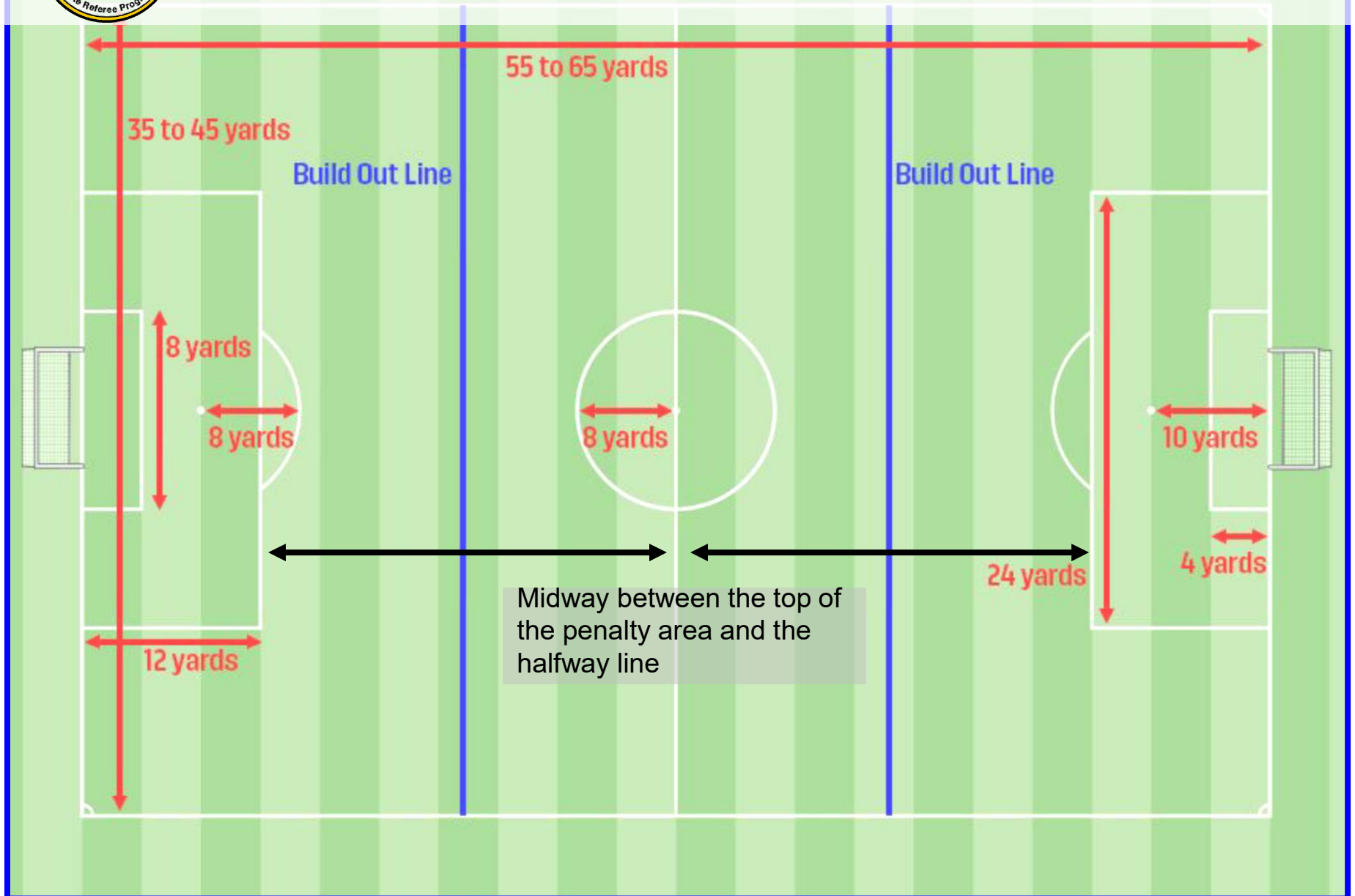


Officiating with Build Out Lines in U9 & U10 Matches





Officiating with Build Out Lines in U9 & U10 Matches



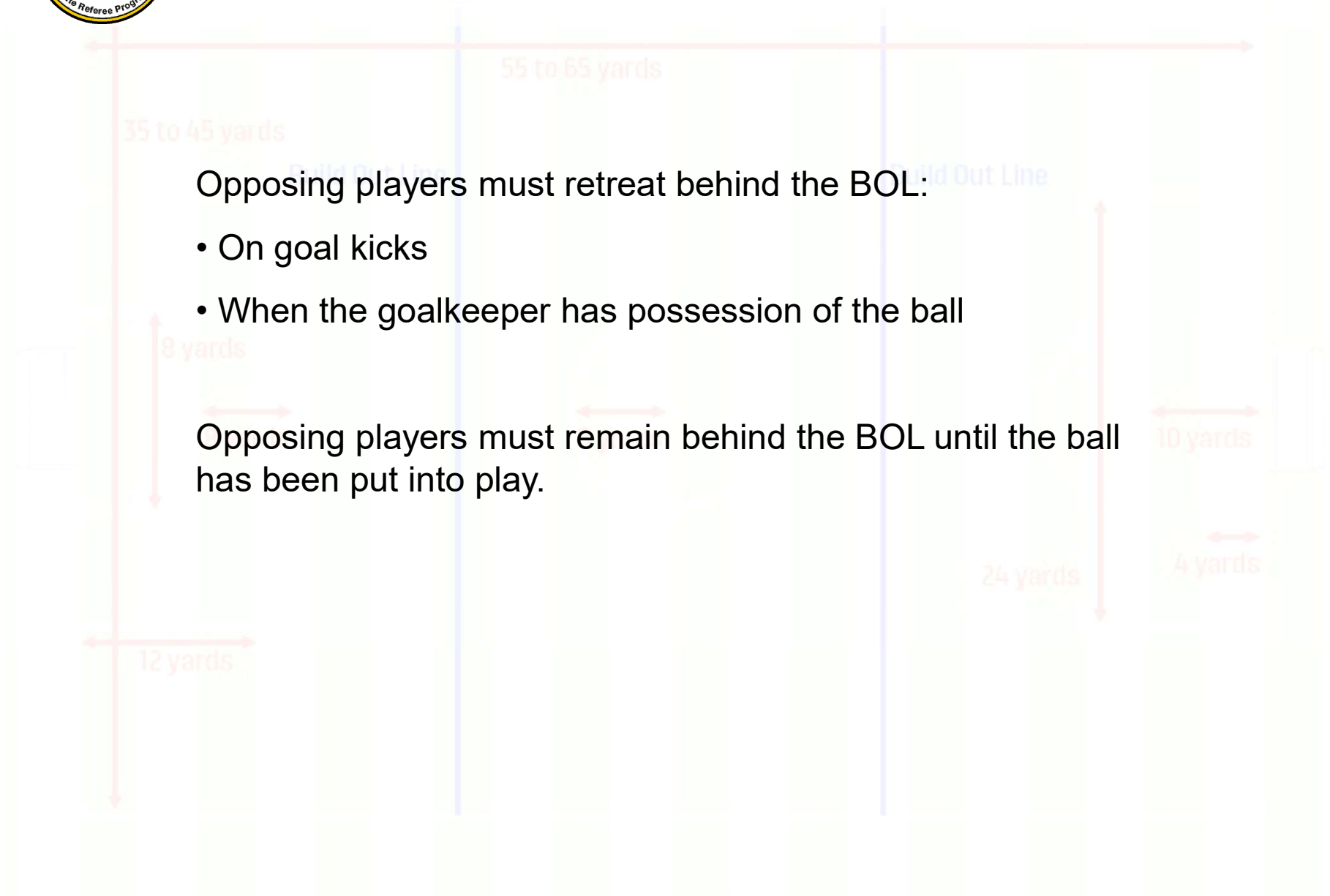


Officiating with Build Out Lines in U9 & U10 Matches

Opposing players must retreat behind the BOL:

- On goal kicks
- When the goalkeeper has possession of the ball

Opposing players must remain behind the BOL until the ball has been put into play.





Officiating with Build Out Lines in U9 & U10 Matches

When the goalkeeper has possession of the ball, they can put the ball back into play by passing, rolling, or throwing it.

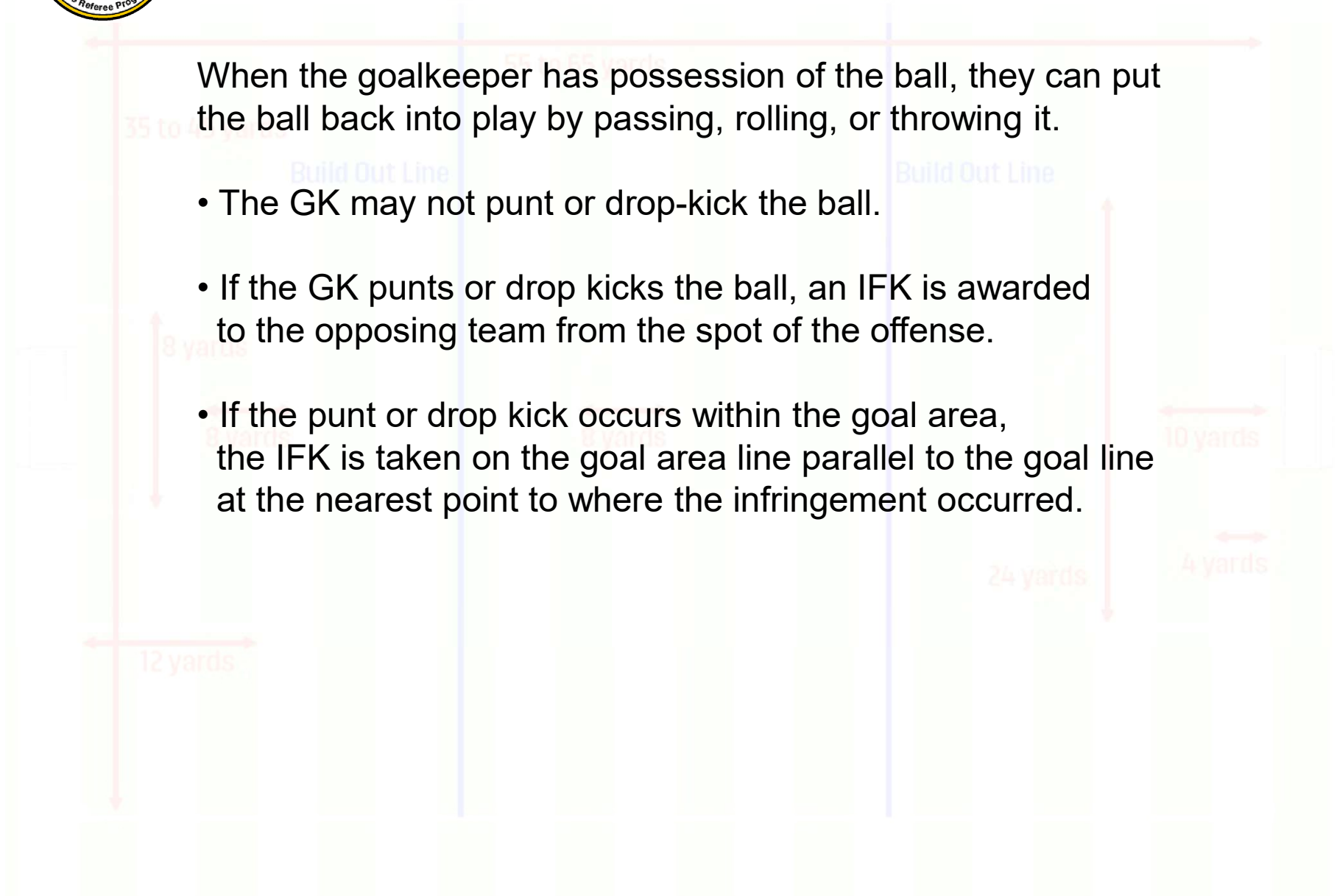
- The GK should, but is not required to, wait until all opponents have retreated behind the BOL before putting the ball back into play.
- Referees should be flexible when enforcing the 6-second law. Counting the time of possession should only begin when all opponents have moved behind the BOL
- If the GK puts the ball back into play before all opponents have retreated behind the BOL, they are stuck with the consequences.



Officiating with Build Out Lines in U9 & U10 Matches

When the goalkeeper has possession of the ball, they can put the ball back into play by passing, rolling, or throwing it.

- The GK may not punt or drop-kick the ball.
- If the GK punts or drop kicks the ball, an IFK is awarded to the opposing team from the spot of the offense.
- If the punt or drop kick occurs within the goal area, the IFK is taken on the goal area line parallel to the goal line at the nearest point to where the infringement occurred.





Officiating with Build Out Lines in U9 & U10 Matches

To support the intent of the development rule, coaches and referees should be mindful of any intentional delays being caused by opponents not retreating in a timely manner or encroaching over the BOL prior to the ball being put into play.

- Coaches are responsible for addressing these types of issues with their players.
- Referees can manage the situation with misconduct if deemed appropriate.
- If the league allows you to show cards to coaches, the first yellow card for misconduct related to BOL should probably be shown to the coach (for either delaying the restart or unsporting behavior).



Officiating with Build Out Lines in U9 & U10 Matches

BOL also affect where offside offenses can be called:

- Players cannot be penalized for an offside offense between the halfway line and the build out line
- Players can be penalized for an offside offense between the build out line and goal line

